

Technical Data Sheet



TOUCH-UP SPRAY 2C

PAINTING - TOUCH-UP

- 2 Componenten PU spuitlak in spuitbus.
- Suitable for painting, repairing, or repainting of powdercoated objects.
- For applications with high quality requirements & high UV protection and chemical resistance.
- Available in all RAL-colors(matt 30%, semi-gloss 70% and high-gloss 85%), transparent and all PVC -& powdercoat colors.

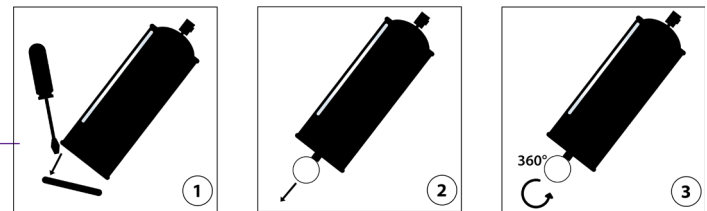
TECHNICAL PROPERTIES

- Direct adhesion on PVC and powder paint, after suitable preparation !
- Pre-treatment with the Duthoo Epoxy Primer or Universal Primer on steel, galva, stainless steel, aluminium and non-ferrous, after suitable preparation of the substrate.
- Yield: 0,7-1 m² per spraycan for 30/40µ dry layer thickness.
- Quick drying
- Does not turn yellow
- Strong coverage power
- Dust dry after 30 minutes - Manageable after 4 hours. - Completely dry after 24-30h.
- Scratch resistant.
- Professional use
- Shelf life: 1 year in unopened packaging. Storage according to the General requirements for aerosols.
- Keep away from frost, humidity and warmth.
- Flammable.

USE

SPRAYCAN PREPARATION:

- Shake well - 2 minutes
- **1/** Remove lid at bottom of spraycan. **2/** Remove the ring from the interior of the lid. **3/** Put the ring through the opening of the valve on the bottom of the spraycan. Then turn the ring 360 °.
- Now the hardener is in the varnish. Then, shake the spraycan for 3 to 4 minutes to mix the varnish and the hardener.
- Life span: 48 hours after mixing.



METHOD OF USE:

- The surfaces must be free of any impurities.
- Sanding with Duthoo Abranylon and degreasing of non-ferrous metals with the Etching Promotor.
- Apply primer and paint with the color of choice.
- Sanding and applying primer on powdercoated surfaces and PVC is not necessary after degreasing with the Etching Promotor and afterwards a waiting time before painting of at least 15 min and within 3h.
- Spray at a distance of 20-25 cm. Apply in several thin wet coats until the desired color is reached.
- The spraycan contains 1 nozzle: 1 flat jet
- Avoid use at temperature below 15 ° c and in extreme heat or humidity.

PACKAGING

400 ML SPRAYCAN