

Technical Data Sheet



CLEARCOAT SPRAY 2C VARNISH

- 2 Component PU clearcoat in spraycan.
- For treating varnished surfaces with the purpose of adjusting the gloss or protecting metallic colors.
- For applications with high quality requirements & good UV protection and chemical resistance.
- Available in matt 30%, semi-gloss 70% and high-gloss 85%

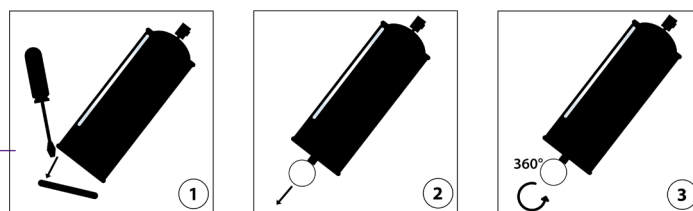
TECHNICAL PROPERTIES

- Dust dry in 15 minutes, manageable in 1h and completely dry after 24/30 hours.
- Direct adhesion on the Duthoo 1C lacquers after 30 minutes and before 3 hours.
- Direct adhesion on applied 2C lacquers after 1h and before 3 hours.
- Direct adhesion on powdercoatings and/or hardened lacquers after pretreatment with Duthoo Etching Promotor.
- Yield: 0,7-1 m² per spraycan for a dry layer thickness of 30/40µ.
- Good resistance to UV, does not turn yellow.
- Good flexibility.
- Scratch resistant. (impact of sand on the coast line)
- Sustainable resistance to household maintenance products at normal use.
- Professional use.

USE

SPRAYCAN PREPARATION:

- Shake well - 2 minutes
- **1/** Remove lid at bottom of spraycan. **2/** Remove the ring from the interior of the lid. **3/** Put the ring through the opening of the valve on the bottom of the spraycan. Then turn the ring 360°.
- Now the hardener is in the varnish. Then, shake the spraycan for 3 to 4 minutes to mix the varnish and the hardener.
- Life span: 48 hours after mixing.



METHOD OF USE:

- The surfaces must be free of any impurities.
- Pretreatment of the hardened, painted surface with Duthoo Etching Promoter OR paint the 1C metallic after at least 30 min of drying and before 3 hours of drying.
- On the Duthoo 1C lacquers after 30 minutes and before 3 hours. On applied 2C lacquers after 1h and before 3 hours.
- On powdercoatings and/or hardened lacquers after pretreatment with Duthoo Etching Promotor.
- Spray at a distance of 20-25 cm. Apply in several thin wet coats until the desired thickness is reached.
- The spraycan contains 1 nozzle: flat jet
- Avoid use at temperature below 15 ° c and in extreme heat or humidity.

PACKAGING

400 ML SPRAYCAN